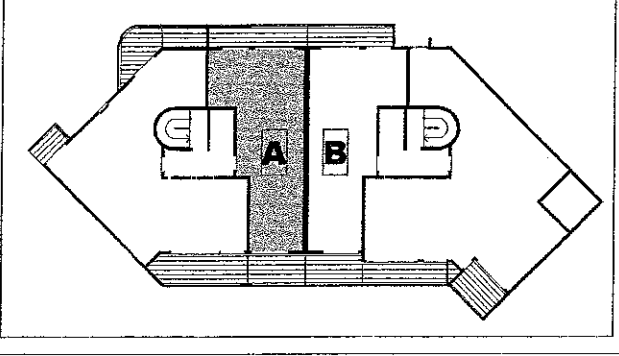


LOGEMENT N°11
TYPE T3
Batiment A
4ème ETAGE
Lot de copropriété N°



SURFACES HABITABLES	
ENTREE	7.13m ²
SE JOUR	16.81m ²
CUISINE	5.26m ²
CHAMBRE 1+ PL	11.81m ²
CHAMBRE 2+ PL	10.48m ²
SDB + pl	4.77m ²
WC	1.90m ²
TOTAL Surface Habitable 58.16m ²	
SURFACES ANNEXES	
BALCONS	17.44m ²

